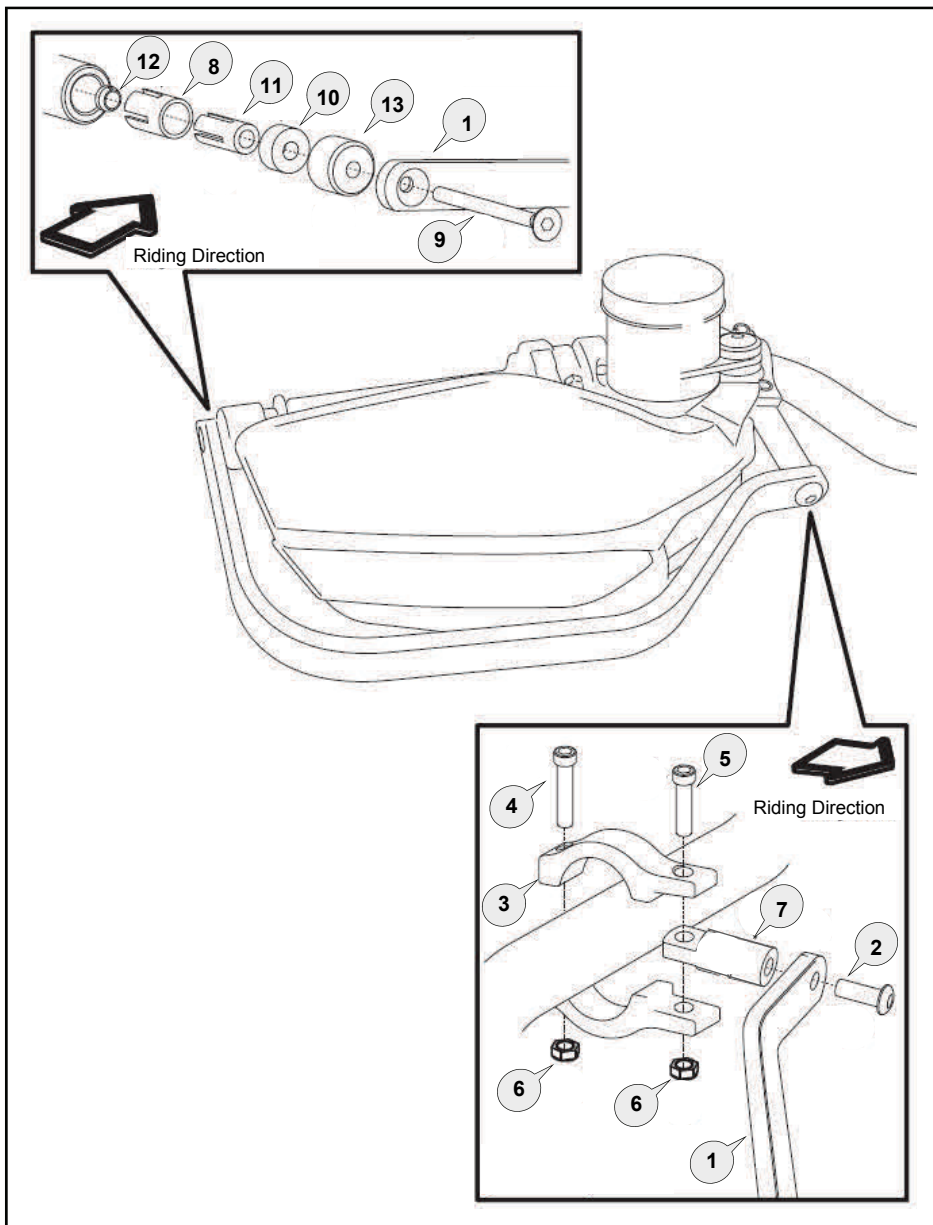


Barkbusters

www.barkbusters.net

**FITTING INSTRUCTIONS for
Ducati Multistrada 1200 (2010 - 2012)**
(mounted in conjunction with original Ducati
plastic handguard)



NOTE:

Barkbusters Lever Guard is to be mounted in conjunction with original Ducati plastic handguards. When mounted correctly, indicators should not be obscured.

Important Fitting Procedure

Remove original Ducati handlebar end caps.

Installation is shown for the right side. Repeat for left side with applicable parts. Loosely assemble clamp to the handlebar (see diagram).

Attach the handguard backbone with applicable parts to the handlebar end and also to the clamp.

Tighten all bolts in the following order using recommended torque specifications over page.

Tighten bolt (9) into the handlebar end.

Tighten bolt (2) through the aluminium bar (1) to the clamp connector (7) of the clamp assembly.

Tighten bolt (5) to solidly lock the clamp connector (7) between the clamp saddles (3).

Tighten bolt (4) to secure the clamp assembly firmly to the handlebar.

Note: The clamp is designed to allow the nut on bolt (5) to pull into the recessed hole. This eliminates the need for a wrench after the bolt starts to tighten.



1 Aluminium Bar



PN: BAR-LG12
Pcs. 2(L/R)

2 Button Head Bolt 25mm



PN: M8x25BHCSZP
Pcs. 2

3 Clamp Saddle



PN: CS-STD
Pcs. 4

4 Socket Head Bolt 30mm



PN: M6x30SHCSZP
Pcs. 2

5 Socket Head Bolt 25mm




PN: M6x25SHCSZP
Pcs. 2

6 Nylock Nut 6mm



PN: M6LN
Pcs. 4

7 Clamp Connector



PN: CP2
Pcs. 2

8 Collet



PN: COLLET14-16
Pcs. 2

9 Flat Head Bolt 70mm



PN: M8x70FHCSZP
Pcs. 2

10 Spacer 10mm



PN: BSSRT10
Pcs. 2

11 Expander




PN: BBE14A
Pcs. 2

12 Nut



PN: NUT 12
Pcs. 2

13 Bar End Weight



PN: BEW
Pcs. 2

Recommended Torque Settings	
M6	10 Nm (7.4 lbf ft)
M8	20 Nm (14.8 lbf ft)



NOTE: Barkbusters Lever Guard is to be mounted in conjunction with original Ducati plastic handguards. Now supplied in **BLACK** powder coated finish.

Disclaimer:

A failure to follow these fitting instructions could cause serious injury, death or property damage. These handguards are intended solely for use with motorcycles/ATV/snowmobiles/scooters that have not been modified. They are not designed to prevent injury or death while riding or in an accident or crash. The user must ensure that all controls are free of the handguards every time that they ride. By installing and/or using this product you acknowledge that you accept these terms and have followed the fitting instructions.

CAUTION:

Installation of the handguard is safety-relevant work and can be complicated. We recommend the installation be performed by a motorcycle service technician. Rideworx accepts no liability for damages caused by improper mounting. All screws, bolts and nuts, including all replacement hardware provided by Rideworx, should be tightened to the torque specified in the table. After the first 50km of riding check all screws, bolts and nuts are tightened to the correct torque. We recommend a medium strength liquid thread lock product on all fasteners.

WARNING:

Check operation of all handlebar controls, specifically the throttle, front brake, kill switch and clutch to ensure they are operating correctly and are in accordance with the OEM specifications. Do not ride the motorcycle if any controls are not operating correctly. Check periodically that all bolts are tight.



Phone: +61 (0)2 4271 8244
Email: info@barkbusters.net
Web: www.barkbusters.net

Barkbusters